



**BUILDING CODE COMPLIANCE OFFICE (BCCO)
PRODUCT CONTROL DIVISION**

**MIAMI-DADE COUNTY, FLORIDA
METRO-DADE FLAGLER BUILDING
140 WEST FLAGLER STREET, SUITE 1603
MIAMI, FLORIDA 33130-1563
(305) 375-2901 FAX (305) 375-2908**

NOTICE OF ACCEPTANCE (NOA)

**EcoStar
P.O. Box 7000
Carlisle, PA 17013**

SCOPE: This NOA is being issued under the applicable rules and regulations governing the use of construction materials. The documentation submitted has been reviewed by the BCCO and accepted by the Building Code and Product Review Committee to be used in Miami Dade County and other areas where allowed by the Authority Having Jurisdiction (AHJ).

This NOA shall not be valid after the expiration date stated below. The Miami-Dade County Product Control Division (In Miami Dade County) and/or the AHJ (in areas other than Miami Dade County) reserve the right to have this product or material tested for quality assurance purposes. If this product or material fails to perform in the accepted manner, the manufacturer will incur the expense of such testing and the AHJ may immediately revoke, modify, or suspend the use of such product or material within their jurisdiction. BORA reserves the right to revoke this acceptance, if it is determined by Miami-Dade County Product Control Division that this product or material fails to meet the requirements of the applicable building code.

This product is approved as described herein, and has been designed to comply with the Florida Building Code, including the High Velocity Hurricane Zone of the Florida Building Code.

DESCRIPTION: Shingle Products (Traditional Slate, Beaver Tail Slate, Beveled Edge Slate, Chisel Point Slate, Seneca Cedar Shake)

LABELING: Each unit shall bear a permanent label with the manufacturer's name or logo, city, state and following statement: "Miami-Dade County Product Control Approved", unless otherwise noted herein.

RENEWAL of this NOA shall be considered after a renewal application has been filed and there has been no change in the applicable building code negatively affecting the performance of this product.

TERMINATION of this NOA will occur after the expiration date or if there has been a revision or change in the materials, use, and/or manufacture of the product or process. Misuse of this NOA as an endorsement of any product, for sales, advertising or any other purposes shall automatically terminate this NOA. Failure to comply with any section of this NOA shall be cause for termination and removal of NOA.

ADVERTISEMENT: The NOA number preceded by the words Miami-Dade County, Florida, and followed by the expiration date may be displayed in advertising literature. If any portion of the NOA is displayed, then it shall be done in its entirety.

INSPECTION: A copy of this entire NOA shall be provided to the user by the manufacturer or its distributors and shall be available for inspection at the job site at the request of the Building Official.

This revises NOA #03-0814.02 and consists of pages 1 through 8.
The submitted documentation was reviewed by Alex Tigera.



**NOA No. 06-0905.05
Expiration Date: 11/03/10
Approval Date: 05/10/07
Page 1 of 8**

ROOFING ASSEMBLY APPROVAL

<u>Category:</u>	Roofing
<u>Sub-Category:</u>	Shingle
<u>Materials</u>	Composite
<u>Deck Type:</u>	Wood
<u>Fire Classification Pressure</u>	See General Limitation #1

SCOPE

This Notice of Acceptance update revises the EcoStar Shingle Products roofing system, as described below in this Notice of Acceptance, designed to comply with the Florida Building Code, 2004 Edition for the High Velocity Hurricane Zone. For the locations where the design pressure requirements, as determined by applicable Building Code, does not exceed the design pressure values obtain by calculations in compliance with RAS 127 using the values listed in the tables herein.

The attachment calculations shall be done as an uplift based system.

TRADE NAMES OF PRODUCTS MANUFACTURED OR LABELED BY APPLICANT:

<u>Product</u>	<u>Dimensions</u>	<u>Test Specifications</u>	<u>Product Description</u>
Traditional Slate	18" long, 12" wide, 1/4" thick	TAS 135	Slate looking composite shingle
Beaver Tail Slate	18" long, 12" wide, 1/4" thick	TAS 135	Slate looking composite shingle
Beveled Edge Slate	18" long, 12" wide, 1/4" thick	TAS 135	Slate looking composite shingle
Chisel Point Slate	18" long, 12" wide, 1/4" thick	TAS 135	Slate looking composite shingle
Seneca Cedar Shake	19" long, 6", 9", 12" wide, 1/4" thick	TAS 135	Shake looking composite shingle
Seneca Plus Cedar Shake	19" long, 6", 9", 12" wide, 1/4" thick	TAS 135	Shake looking composite shingle

EVIDENCE SUBMITTED:

<u>Test Agency</u>	<u>Test Identifier</u>	<u>Test Name/Report</u>	<u>Date</u>
Architectural Testing Incorporated	ATI-39866.02	TAS 100	09/19/01
	ATI-57885.01	TAS 102	09/14/05
	ATI-41583.03	TAS 135	08/05/05
	63484.01	TAS 102	06/28/06
	65341.01-109-18	TAS 102	06/14/06
Underwriters Laboratories Inc.	98NK28255	UL 790	10/19/04



NOA No. 06-0905.05
 Expiration Date: 11/03/10
 Approval Date: 05/10/07
 Page 2 of 8

APPROVED SYSTEMS:

Deck Type: Wood, Non-insulated

Deck Description: 15/32" or greater plywood or wood plank.

Slope Range: 3:12 or greater

Maximum Uplift Pressure:

The maximum allowable uplift pressure shall be calculated as an uplift based system using the data in the Tables below.

Deck Attachment: In accordance with applicable Building Code, but in no case shall it be less than #8 x 1 $\frac{5}{8}$ " wood screws spaced 6" o.c. In reroofing, where the deck is less than $\frac{19}{32}$ " thick (Minimum $\frac{15}{32}$ "), the above attachment method must be in addition to the existing attachment

Installation:

Install a minimum 30 lb felt over the wood deck surface as required by code. Install an "ice & water shield" type approved product in all valley, eave, hip, ridge and projection areas. Install an approved metal flashing along eave and rake edges as required by code.

Install a starter row of shingles along the eave edge. Begin installing the first row of shingles by completely covering the starter row with the first row of shingles. Offset the shingles by half a shingle width from the starter row. Continue installing rows of shingles up the slope until the roof deck is covered. The shingles can be cut as needed by scoring with a utility knife and snapping by hand. Install pre-formed ridge shingles to all hips and ridges.

Valleys:

Valley metal shall be a minimum 16" wide 26 gage G-90 galvanized steel. Valley metal shall be set over a minimum 36" wide sweat sheet of minimum ASTM D 226 type II felt embedded in roofing cement or an "ice & water shield" type of approved self-adhered membrane. Valley metal shall be secured with roofing nails spaced a maximum 4" o.c. at the outer most part of metal on each side. When additional protection for the valley metal edges is required the edges shall be stripped-in with an "ice & water shield" type product. Valley details shall be completed in accordance with the current published manufacturer's literature.



General

Application:

EcoStar Shingle Products shall be installed in accordance with EcoStar’s current published installation specifications using a maximum 7” exposure for the Majestic Slate products and a maximum 8” exposure for the Seneca Shake products (see Detail B). EcoStar Shingle Products shall be fastened with a minimum of two, 1-1/2” long, corrosion resistant roofing nails (stainless steel is recommended) at the nail locations molded into the shingles (see Detail A).

Each shingle must be bent by hand in a downward arch before attaching to the roof deck to ensure a flat installation. Do not butt the shingles tight together. Maintain a 3/8” gap between adjacent shingles by aligning each successive row of shingles with the vertical guidelines molded into the shingles. Each row of shingles must be offset by half a shingle width from the row below to cover the nails previously installed.

The exposed shingle tabs may be secured with EcoStar Tile Tape (See Table 2) or with a 1/4” wide bead of Dow Corning® 790 Sealant (See Table 3). The tape is applied to the underside of the tab at a location 1” to 1.5” from the exposed edge and extending to within 1” of each side. The sealant is also applied to the underside of the tab at a location 1” to 3” from the exposed edge and extending to within 1” of each side.

Table 1: Average Weight (W) and Demensions (l x w) From TAS 102 Testing			
Profile	Weight-W (lbf)	Length-l (ft)	Width-w (ft)
Traditional Slate	1.5	1.5	1
Beaver Tail Slate	1.5	1.5	1
Beveled Edge Slate	1.31	1.5	1
Chisel Point Slate	1.17	1.5	1
Seneca Cedar Shake	1.47	1.5	1
Seneca Cedar Plus Shake	1.47	1.5	1

Table 2: Minimum Characteristic Resistance Load - F' (lbf) For Mechanically Attached Systems (using EcoStar Tile Tape)		
Profile	Application	Attachment Resistance (lbf)
Traditional Slate Shingle*	Two 1-1/2” long, corrosion resistant roofing nails	31.9
Beaver Tail Slate*	Two 1-1/2” long, corrosion resistant roofing nails	31.9

*Installed with EcoStar Tile Tape in addition to mechanical attachment.



Table 3: Minimum Characteristic Resistance Load - F' (lbf) For Mechanically Attached Systems (using Sealant Tape)		
Profile	Application	Attachment Resistance (lbf)
Traditional Slate Shingle*	Two 1-1/2" long, corrosion resistant roofing nails	65.91
Beaver Tail Slate*	Two 1-1/2" long, corrosion resistant roofing nails	65.91
Beveled Edge Slate*	Two 1-1/2" long, corrosion resistant roofing nails	68.51
Chisel Point Slate*	Two 1-1/2" long, corrosion resistant roofing nails	67.29
Seneca Cedar Shake*	Two 1-1/2" long, corrosion resistant roofing nails	52.06
Seneca Cedar Plus Shake*	Two 1-1/2" long, corrosion resistant roofing nails	52.06

*Installed with 1/4" wide bead of Dow Corning® 790 Sealant in addition to mechanical attachment.

MANUFACTURING FACILITIES:

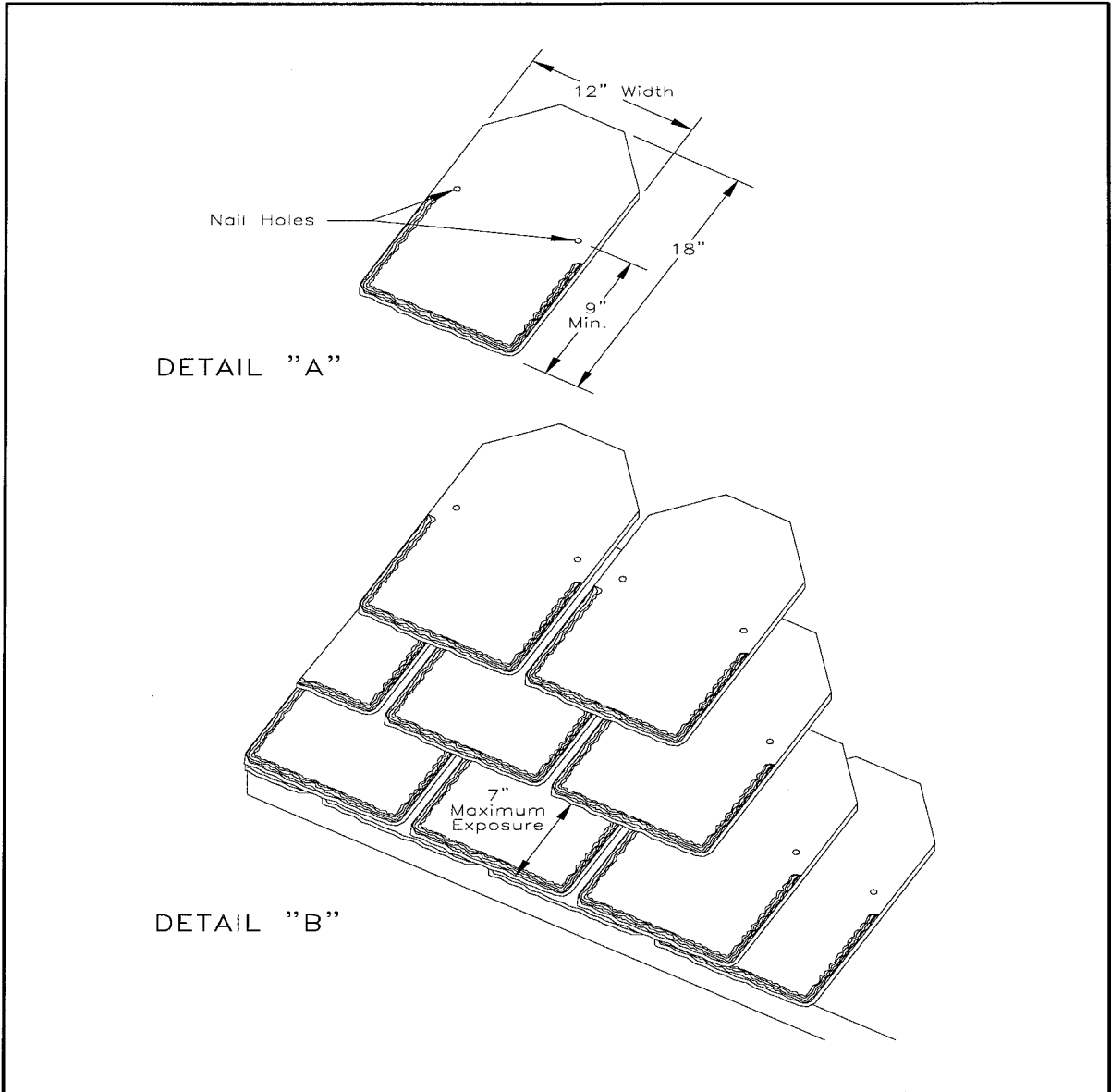
1. HOLLAND, NY

GENERAL LIMITATIONS:

1. Fire classification is not part of this acceptance. Refer to published third party testing data to verify compliance with the Florida Building Code.
2. All packaging shall be labeled with the manufacturer's name or logo, city, state and the following statement: "Miami Dade County Product Control Approved".
3. All products listed herein shall have a quality assurance audit in accordance with the Florida Building Code and Rule 9B-72 of the Florida Administrative Code.

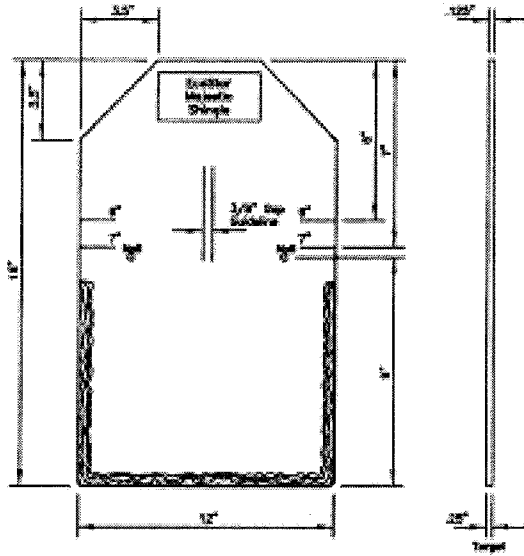


DRAWINGS
MAJESTIC SLATE SHINGLE
DETAILS A & B

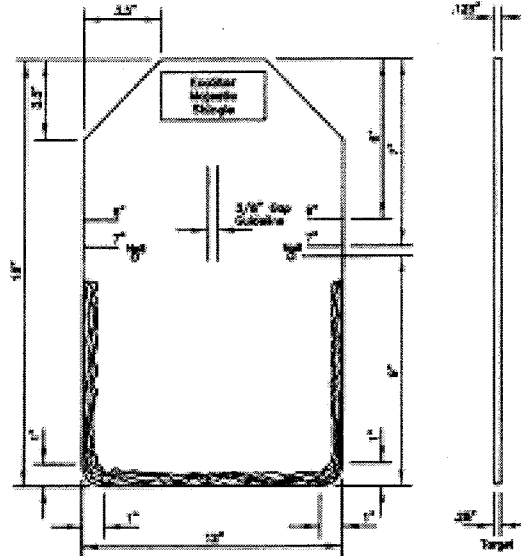


DRAWINGS (CONTINUED)

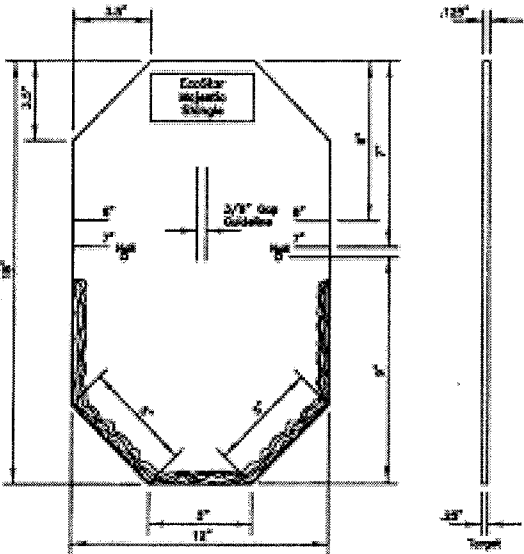
DETAIL C



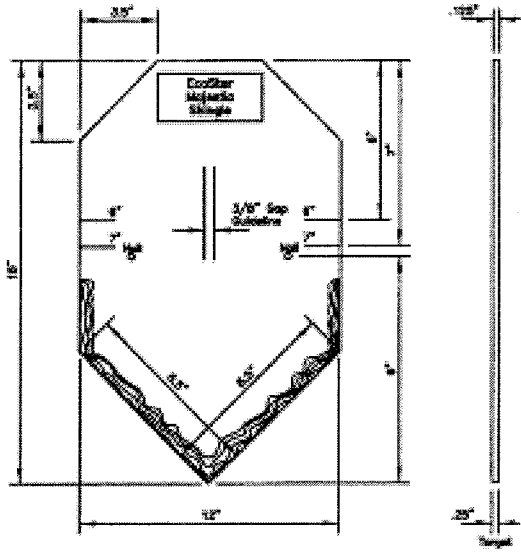
EcoStar TRADITIONAL SLATE in Inch



EcoStar BEAVER TAIL SLATE in Inch



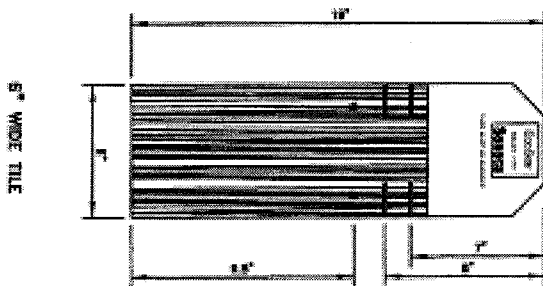
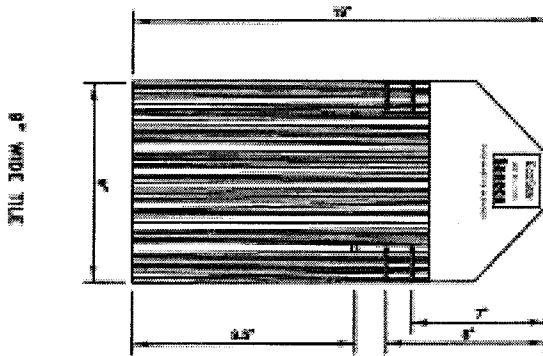
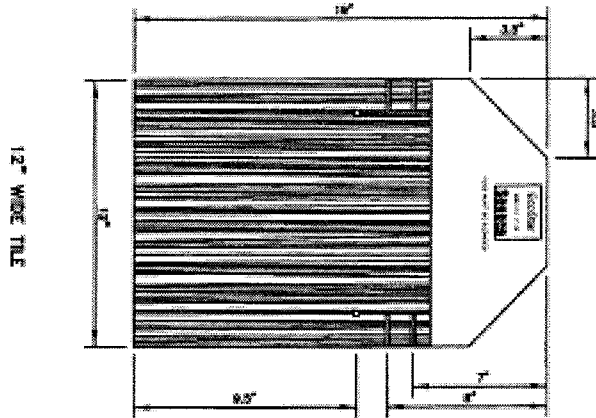
EcoStar REVELED EDGE SLATE in Inch



EcoStar CHISEL POINT SLATE in Inch



DETAIL C (CONTINUED)



1/2" x 1/2" Grid for Reference

END OF THIS ACCEPTANCE

